

DOCUMENT RESUME

ED 192 518

FL 011 222

TITLE Headstart German Program. Module 1.
INSTITUTION Defense Language Inst., Monterey, Calif.
PUB DATE Sep 77
NOTE 39p.: For related documents, see FL 011 223-234.
AVAILABLE FROM Defense Language Institute, Foreign Language Center,
Nonresident Instruction Division, Presidio of
Monterey, CA 93940
LANGUAGE English; German
EDRS PRICE MF01/PC02 Plus Postage.
DESCRIPTORS *Conversational Language Courses; Cross Cultural
Training; Cultural Education; *German; Learning
Activities; Learning Modules; Phonology;
Postsecondary Education; *Pronunciation; *Second
Language Learning; *Speech Communication; Speech
Skills; *Vocatlary Development

ABSTRACT

This is the first module of 10 in the German Headstart program. Each of the 2 units in the module contains objectives, exercises, and a self-evaluation quiz. In addition, there are several supplementary exercises and self-evaluations. The objective of this module is to enable the student to pronounce and read German sounds, to find out the location of some landmarks in German, and to understand various answers one might get to some questions. Unit One deals with the most important differences between sounds and spellings of German and English; unit two presents conversations and exercises on them. (AMH)

* Reproductions supplied by EDRS are the best that can be made *
* from the original document. *

HEADSTART

GERMAN PROGRAM

ED192518

MODULE I



"PERMISSION TO REPRODUCE THIS MATERIAL HAS BEEN GRANTED BY

Robert P. Schoffman
Adjutant

TO THE EDUCATIONAL RESOURCES INFORMATION CENTER (ERIC)."

U.S. DEPARTMENT OF HEALTH,
EDUCATION & WELFARE
NATIONAL INSTITUTE OF
EDUCATION

THIS DOCUMENT HAS BEEN REPRODUCED EXACTLY AS RECEIVED FROM THE PERSON OR ORGANIZATION ORIGINATING IT. POINTS OF VIEW OR OPINIONS STATED DO NOT NECESSARILY REPRESENT OFFICIAL NATIONAL INSTITUTE OF EDUCATION POSITION OR POLICY.

FL01222

Prepared by
**DEFENSE LANGUAGE INSTITUTE
FOREIGN LANGUAGE CENTER**

SEPTEMBER 1977

THIS PUBLICATION IS TO BE USED PRIMARILY IN SUPPORT OF TRAINING MILITARY PERSONNEL AS PART OF THE DEFENSE LANGUAGE PROGRAM (RESIDENT AND NONRESIDENT). INQUIRIES CONCERNING THE USE OF THESE MATERIALS, INCLUDING REQUESTS FOR COPIES, SHOULD BE ADDRESSED TO:

DEFENSE LANGUAGE INSTITUTE
FOREIGN LANGUAGE CENTER
NONRESIDENT INSTRUCTION DIVISION
PRESIDIO OF MONTEREY, CA 93940

TOPICS IN THE AREAS OF POLITICS, INTERNATIONAL RELATIONS, MORES, ETC., WHICH MAY BE CONSIDERED AS CONTROVERSIAL FROM SOME POINTS OF VIEW ARE SOMETIMES INCLUDED IN LANGUAGE TRAINING FOR DLIFLC STUDENTS, SINCE MILITARY PERSONNEL MAY FIND THEMSELVES IN POSITIONS WHERE CLEAR UNDERSTANDING OF CONVERSATIONS OR WRITTEN MATERIAL OF THIS NATURE WILL BE ESSENTIAL TO THEIR MISSION. THE PRESENCE OF CONTROVERSIAL STATEMENTS--WHETHER REAL OR APPARENT--IN DLIFLC MATERIALS SHOULD NOT BE CONSTRUED AS REPRESENTING THE OPINIONS OF THE WRITERS, OF THE DEFENSE LANGUAGE INSTITUTE, OR OF THE DEPARTMENT OF DEFENSE.

CONTENTS

Introduction	1
Unit 1	2
Objectives	2
Exercises	2
Self-evaluation Quiz	11
Unit 2	12
Objectives	12
Exercises	12
Self-evaluation Quiz	25
Key to Self-evaluation Quiz	27
Guide for Review	28
Supplementary Exercise A	28
Supplementary Self-evaluation Quiz A	29
Supplementary Exercise B	30
Supplementary Self-evaluation Quiz B	31
Vocabulary	33

MODULE I

INTRODUCTION

In the first module you will learn to pronounce and read German, to find out the location of some landmarks in Germany, and to understand various answers you may get to your questions.

In Unit 1 the most important differences between sounds and spellings of German and English will be given. Once you understand the system, you will be able to pronounce correctly almost any German word that you see printed somewhere (signs, maps, menus, etc.).

In Unit 2 of this module there are some conversations between Mike Halloway and some Germans. An English translation is provided, but it is not a word-for-word translation. You will learn to play the role of Mike, ask the same questions he is asking, and understand the answers the Germans give. In addition, you will work through a number of exercises, most of which are based on the conversations. Remember that the persons speaking on the tape talk to you and that you must talk back. When you do the exercises, please SPEAK UP. Imitate the German speaker on the tape as closely as you can and always speak loudly and clearly.

After the exercises, you will be able to test what you have learned through a self-evaluation quiz. Take this quiz when you feel you are ready to check your progress. If you are unsure about your answers, refer back to the conversation or to the supplementary exercises included in the Guide for Review; then take the appropriate supplementary self-evaluation quiz. If you need further help, talk to your instructor.

Since the objective of this course is for you to speak some German and understand what Germans say to you, most of these exercises are done orally. You will say something in German; then you will hear on the tape what you should have said. For some exercises you will hear something said by a German on the tape and will translate what the German said into English to show your understanding.

All explanations and instructions on what you are expected to do are on tape. Only the exercises requiring you to work with the printed text have been included in your book. Important features of the language are also highlighted in boxes in the book. At the end of the module, you will find an alphabetical reference list of all the German words you learned in this module with their English meanings.

Now read the objectives for the first unit.

UNIT I

OBJECTIVE

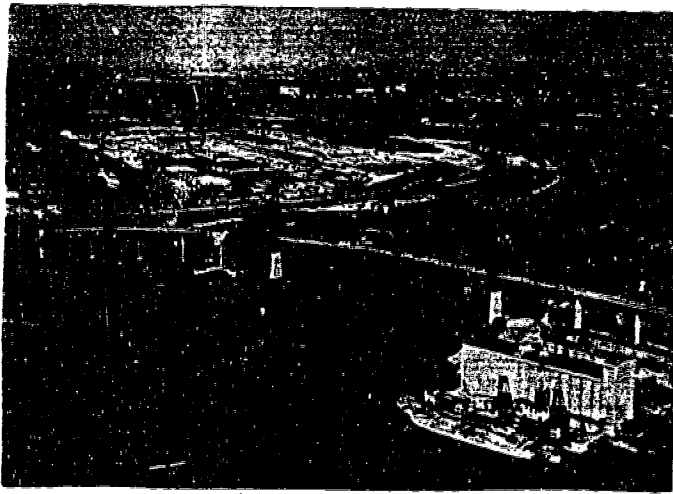
When you have completed Unit I, you will be able to pronounce most German sounds correctly when written in print; specifically, you will be able to pronounce the common German first names and the names of major cities and some famous people in German.

Turn on the tape recorder and follow the instructions given on the tape for Unit I.

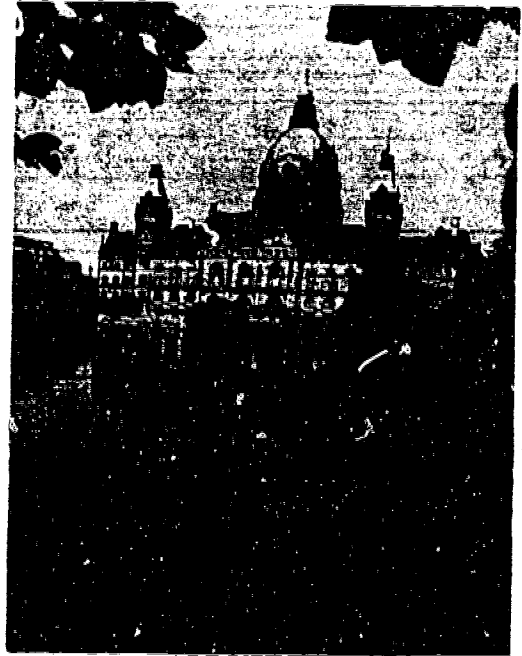
EXERCISES

Karte von Deutschland
(Map of Germany)

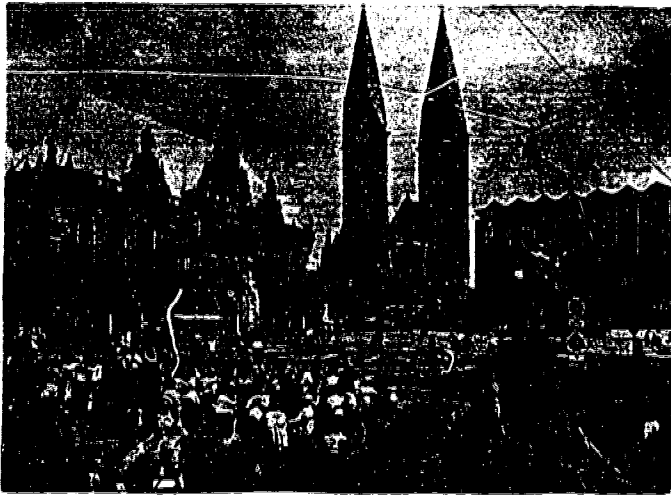




Hamburg



Hannover



Bremen



Berlin

EXERCISE 3.

Hamburg - Hannover

1. dann then
2. danke thanks
3. dies the, this
4. Bank bank

Bremen

5. gehen go
6. er he
7. der the
8. erste first

Hannover

9. Hotel hotel
10. Bahnhof station

Dortmund

11. dort there
12. von from
13. Post post office

EXERCISE 5.

Düsseldorf - München

1. Brücke bridge

München

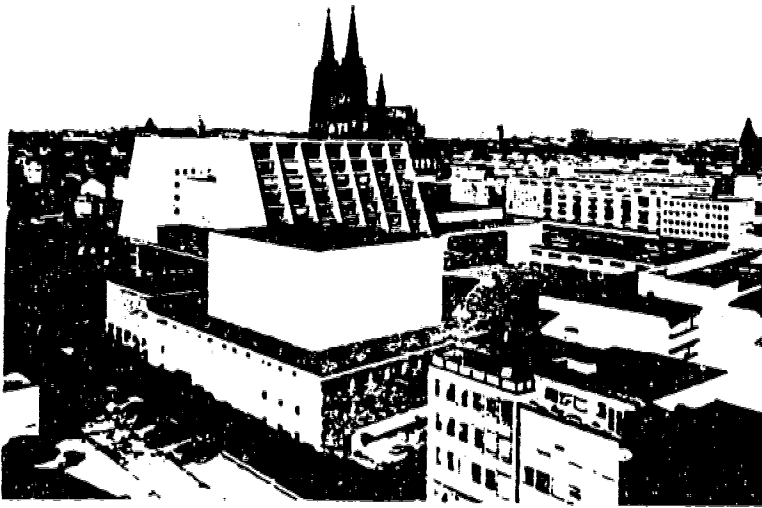
2. ich I
3. nicht not
4. rechts right
5. Kirche church

Mien

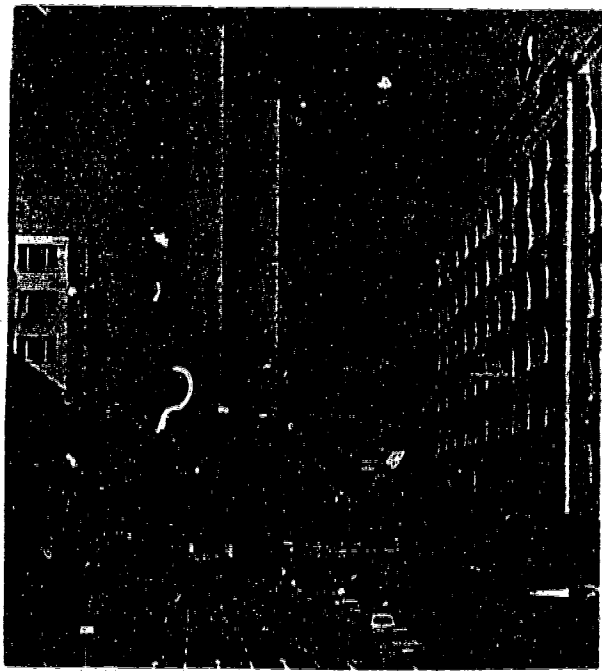
6. was what
7. wo where

Wien

8. die the
9. hier here
10. vielen many



Köln



Füsseldorf

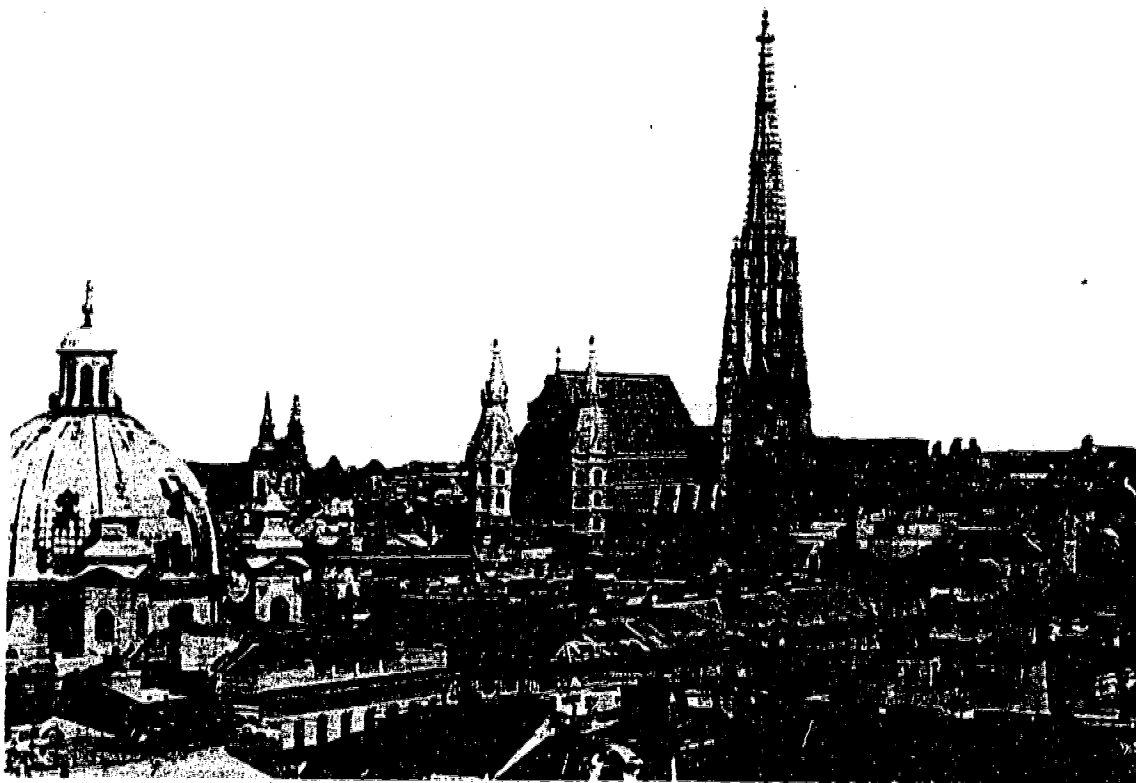
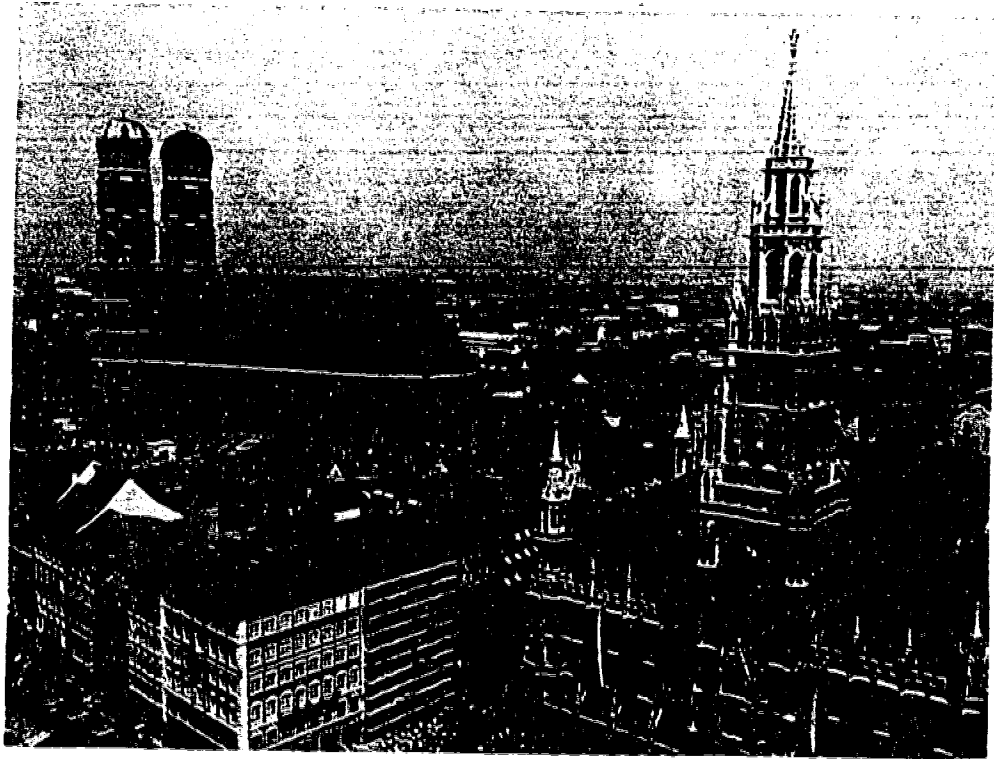


Frankfurt



Stuttgart

München



Wien



EXERCISE 8.

Stuttgart

- 1. Straße street
- 2. Haltestelle bus or street-car stop

Münchberg

- 3. Auto car
- 4. Kaufhaus department store
- 5. Rathaus city hall
- 6. Krankenhaus hospital

Heidelberg

- 7. eine a
- 8. nein no
- 9. zweite second
- 10. Polizei police

Saarbrücken

- 11. Sie you
- 12. sind are
- 13. langsam slow
- 14. Kasernen barracks
- 15. auf Wiedersehen good-bye

Gießen

- 16. Straße street
- 17. Schloss castle

Stuttgart

- 18. Bus bus

EXERCISE 9.

1. Einstein



2. Freud



MODULE I

3. Martin Luther



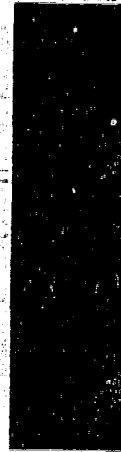
6. Mozart



4. von Richthofen



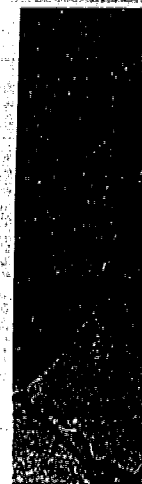
7. Wagner



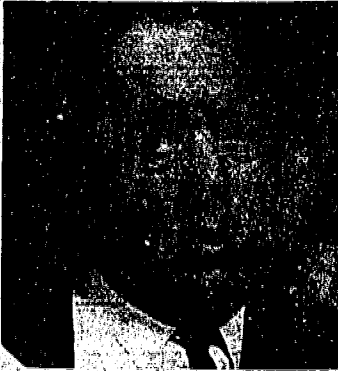
5. Bach



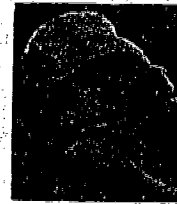
8. Hermann



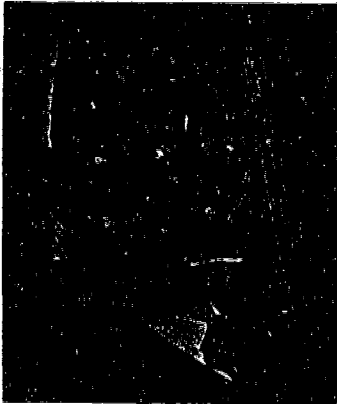
9. Böll



11. Marlene Dietrich



10. Thomas Mann



EXERCISE 10.

- | | |
|----------|-------------|
| 1. Ulla | 8. Richard |
| 2. Jutta | 9. Werner |
| 3. Heide | 10. Peter |
| 4. Inge | 11. Jürgen |
| 5. Karin | 12. Klaus |
| 6. Ruth | 13. Uwe |
| 7. Maria | 14. Wilhelm |

You may now take the Self-evaluation Quiz for Unit 1.

SELF-EVALUATION QUIZ

You can now test your ability to pronounce German correctly when you see it in print. Read the following 15 city names and five personal names aloud. Then compare what you said, one by one, with the tape. After you have tested yourself, check your pronunciation with an instructor, if one is available. Start the tape again.

- | | |
|----------------|-----------------|
| 1. Deutschland | 11. Aachen |
| 2. Frankfurt | 12. Saarbrücken |
| 3. Berlin | 13. Heidelberg |
| 4. Stuttgart | 14. Augsburg |
| 5. München | 15. Bonn |
| 6. Köln | 16. Einstein |
| 7. Wien | 17. Mozart |
| 8. Zürich | 18. Freud |
| 9. Bremen | 19. Luther |
| 10. Hannover | 20. Jutta |

You may now read the objectives for Unit 2.

UNIT 2

OBJECTIVES

You will be able to:

1. Ask questions about the location of some common places.
2. Ask what something is called in German and understand possible answers.
3. Use some courtesy expressions.

Turn on the tape recorder and follow the instructions given on the tape for Unit 2.

EXERCISES

EXERCISE 1.

Where is the train station?

- Mike: Excuse me, please. Where is the train station?
- German (male): Go straight ahead -- the first street to the left.
- Mike: I am an American. Please speak slowly.
- German (male): Go straight ahead -- the first street to the left. Then the second right.
- Mike: Thank's a lot. Good-bye.
- German (male): Good-bye.
-
- Mike: What is that please? Is that the train station?
- German (female): Yes, that is the train station.
- Mike: Thank you very much.

EXERCISE 5.

Wo ist der Bahnhof?



Mike: Entschuldigen Sie, bitte. Wo ist der Bahnhof?

Deutscher: Gehen Sie geradeaus, die erste Straße links.

Mike: Ich bin Amerikaner. Sprechen Sie bitte langsam.

Deutscher: Gehen Sie geradeaus. Die erste Straße links. Dann die zweite rechts.

Mike: Danke schön. Auf Wiedersehen.

Deutscher: Auf Wiedersehen.

Mike: Was ist das bitte? Ist das der Bahnhof?

Deutsche: Ja, das ist der Bahnhof.

Mike: Vielen Dank.



EXERCISE 14.

Wo ist der Bahnhof?	Where is the train station?
Wo ist das Hotel Hilton?	Where is the Hotel Hilton?
Wo ist die Straße?	Where is the street?

die Polizei (police station)	Wo ist die Polizei?
das Schloß (castle)	Wo ist das Schloß?

EXERCISE 15.

Example:

die Bank

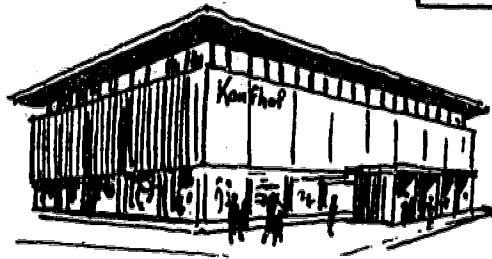


bank

Wo ist You say:

"Wo ist die Bank?"

1. das Kaufhaus



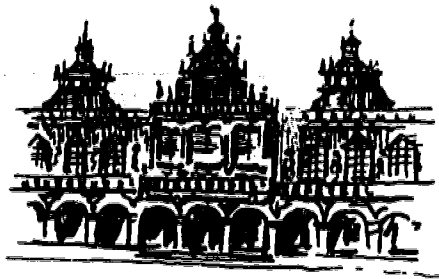
department store

2. die Haltestelle



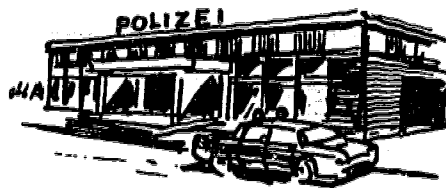
stop (bus or street-car)

3. das Rathaus



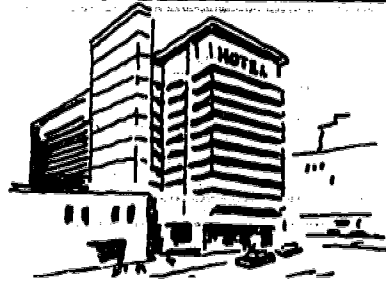
city hall

4. die Polizei



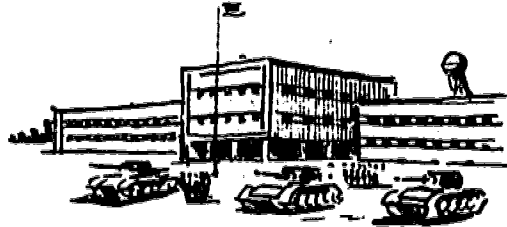
police station

5. das Hotel



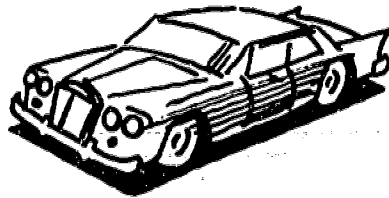
hotel

6. die Kaserne



barracks

7. das Auto



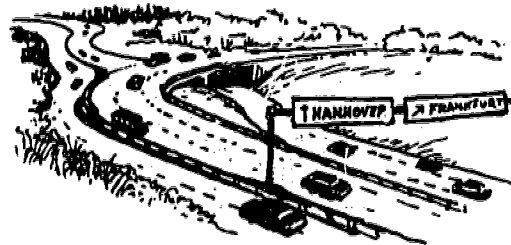
car

8. die Post



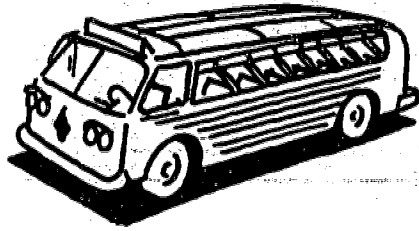
post office

9. die Autobahn



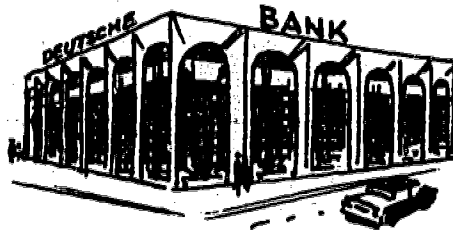
expressway,
freeway

10. der Bus



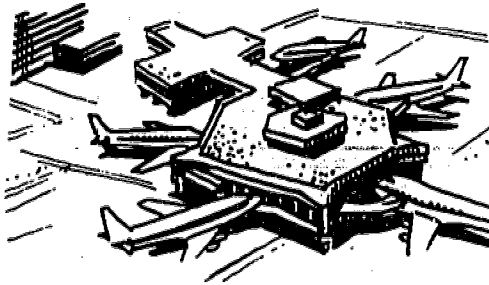
bus

11. die Bank



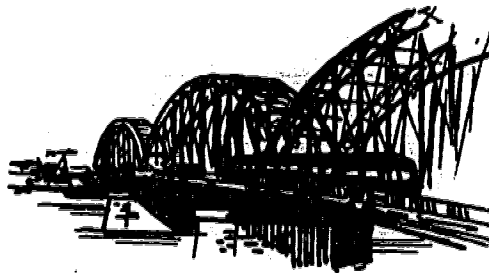
bank

12. der Flughafen



airport

13. die Brücke



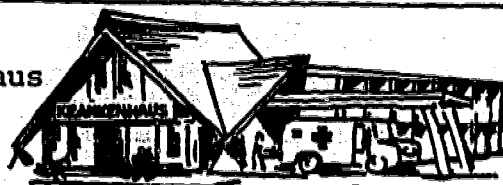
bridge

14. die Kirche



church

15. das Krankenhaus



hospital

16. das Schloß



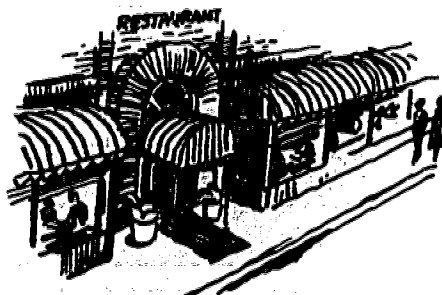
castle

17. die Straßenbahn-
haltestelle



streetcar stop

18. das Restaurant



restaurant

19. der Bahnhof



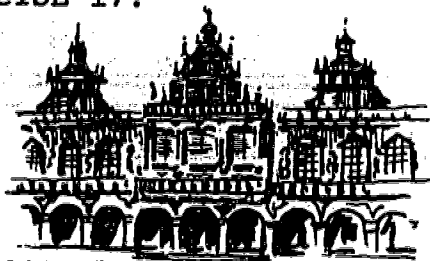
railroad station

EXERCISE 16.

Was ist das bitte?	Das ist die Kaserne.
	Das ist das Rathaus.

EXERCISE 17.

1.



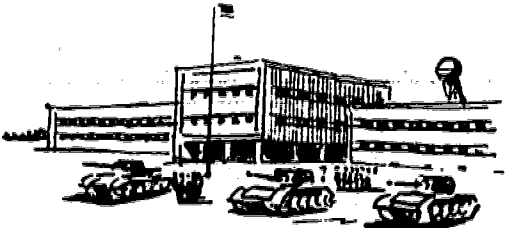
5.



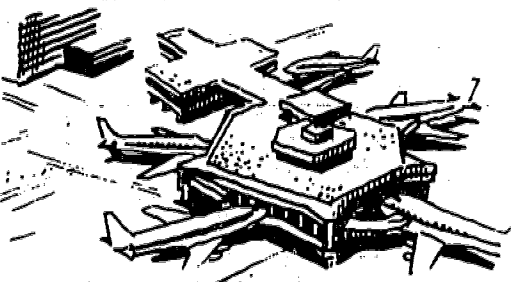
2.



6.



3.



7.



4.



EXERCISE 18.

der Bus	ein	Bus
das Hotel		Hotel

die Brücke	eine	Brücke

Example:

- | | |
|----------------|----------------|
| 1. Auto | 6. Hotel |
| 2. Bus | 7. Kaufhaus |
| 3. Krankenhaus | 8. Flughafen |
| 4. Bahnhof | 9. Rathaus |
| 5. Schloß | 10. Restaurant |

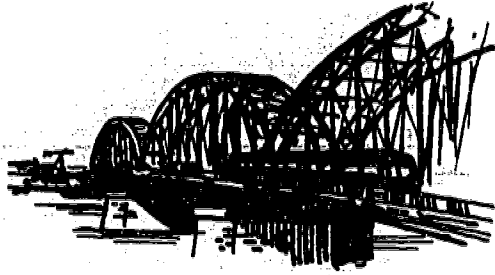
Example:

- | | |
|-------------|-------------------|
| 1. Brücke | 5. Kirche |
| 2. Post | 6. Kaserne |
| 3. Bank | 7. Bushaltestelle |
| 4. Autobahn | 8. Straßenbahn |

EXERCISE 19.

Was ist das auf deutsch?
Das ist ein/eine

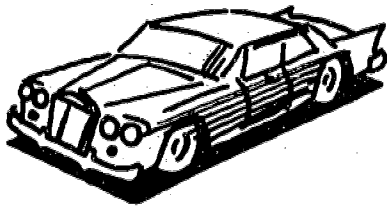
1.



6.



2.



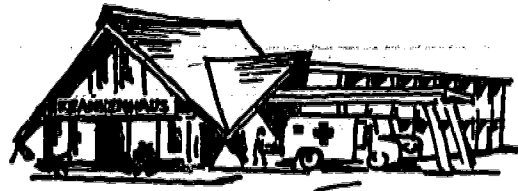
7.



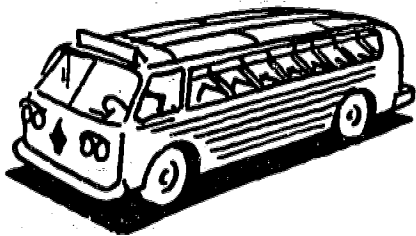
3.



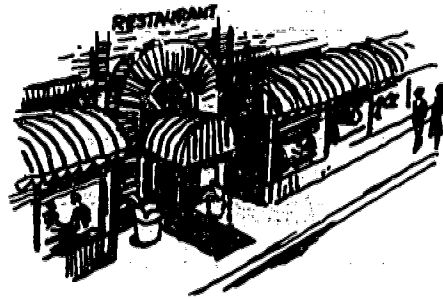
8.



4.



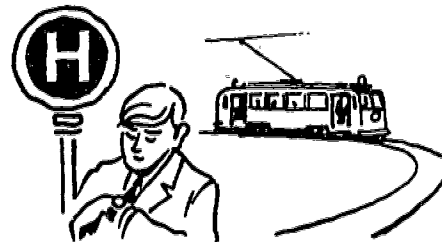
9.



5.



10.



EXERCISE 20.

Entschuldigen Sie bitte, wo ist hier ein Restaurant?

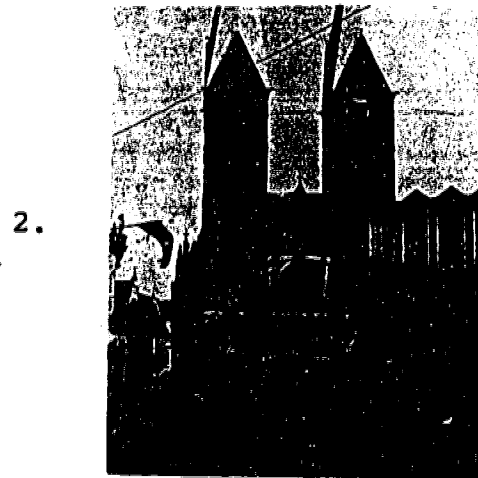
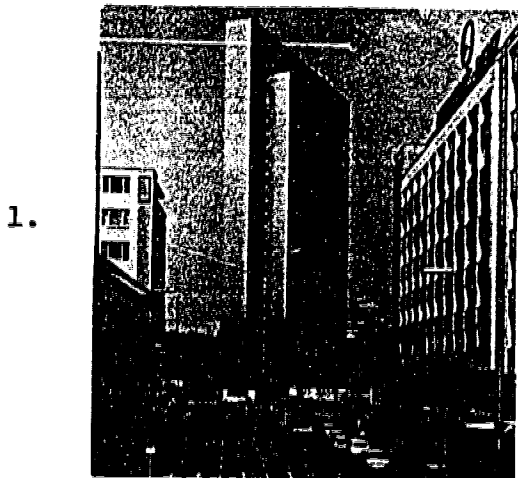
EXERCISE 21.

Ist das der Bahnhof? { Ja, das ist der Bahnhof.
 Nein, das ist das Krankenhaus.

- | | |
|---|---|
| 1. Ist das die Post? | Nein, das ist eine Bank.
Die Post ist dort. |
| 2. Ist das hier eine Bushaltestelle? | Nein, das ist eine Straßenbahnhaltestelle. Die Bushaltestelle ist dort. |
| 3. Ist das hier eine Karte von Deutschland? | Nein, die Karte von Deutschland ist dort. |
| 4. Entschuldigen Sie, wo ist hier ein Restaurant? | Gehen Sie die zweite Straße links, dann geradeaus. Dort ist ein Restaurant. |

Ist das der Bahnhof? Nein, das ist nicht der Bahnhof.
 Das ist ein Krankenhaus.

EXERCISE 22.



MODULE I

3.

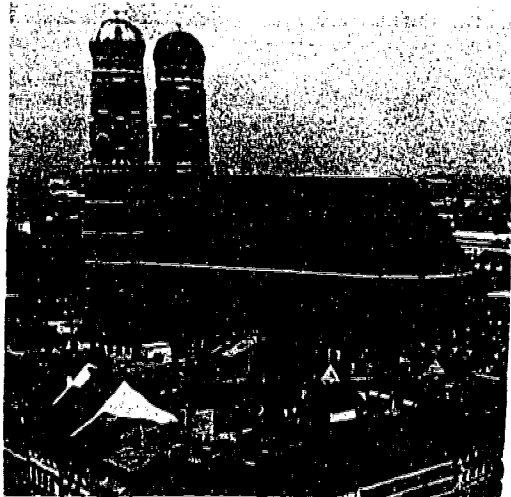
4.

6.

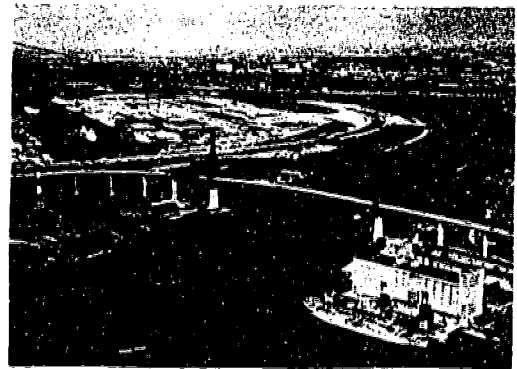
UNIT 2



7.



8.



EXERCISE 23.

Deutscher	Amerikaner (male)
Deutsche	Amerikanerin (female)

Sind Sie . . ?	(Are you . . ?)

- | | |
|--|---|
| 1. Sind Sie Deutsche? | Nein, ich bin Amerikanerin. |
| 2. Was sind Sie, sind Sie Amerikaner? | Nein, ich bin Deutscher. |
| 3. Wo ist hier ein Krankenhaus? | Gehen Sie die zweite Straße links, dann die erste rechts, dort ist ein Krankenhaus. |
| 4. Wo ist die Karte von Deutschland? | Hier, nicht dort. |
| 5. Ist das eine Karte von Deutschland? | Nein, das ist eine Karte von Amerika, die Karte von Deutschland ist dort. |
| 6. Ist das das Rathaus? | Nein, das ist eine Bank. Das Rathaus ist dort. |

7. Wo sind Sie? Ich bin hier, in Frankfurt.
8. Sind Sie in Deutschland? Ja, ich bin in Bonn.
9. Sind Sie nicht in Berlin? Nein, ich bin in München.

SELF-EVALUATION QUIZ

PART I.

You will hear six situations explained to you in English. The same explanations are in your book. For each of these situations you will hear three German expressions. Select the German expression most appropriate to the situation by writing A for the first expression, B for the second, or C for the third next to the number on your paper. All of your selections must be correct. Start the tape again.

1. You approach a stranger in the street. How would you say "Excuse me please. Where are the barracks?"
2. You want a German to speak slowly. What would you say?
3. You see a building and want to know if it's the city hall. What would you say?
4. You want to ask what something is called in German. What would you say?
5. You want to thank someone. What would you say?
6. You want to say good-bye to someone. What would you say?

PART II.

You will hear six German statements. Each will be given twice. Select the correct translation for each statement from the four choices in your book and write A, B, C, or D on your paper. All of your selections must be correct. Start the tape now.

1. A. Go straight ahead, then the first street to the left.
B. Go straight ahead, then the second street to the right.
C. Go straight ahead, then the second street to the left.
D. Go straight ahead, then the first street to the right.
2. A. The map of Germany is over there.
B. Here is the map of Germany.
C. Where is the map of Germany?
D. This is not a map of Germany.

3.
 - A. Is this a map of America?
 - B. Are you an American (male)?
 - C. Are you an American (female)?
 - D. I'm an American.
4.
 - A. This church is not in Munich.
 - B. Is there a church in Munich?
 - C. This is a map of Munich.
 - D. None of the above.
5.
 - A. Go straight ahead. There is a department store.
 - B. Go straight ahead. There is a hospital.
 - C. Go straight ahead. There is the city hall.
 - D. Go straight ahead. There is the castle.
6.
 - A. This is the post office, not a bank.
 - B. The bank is over there.
 - C. This is not the post office. This is a bank.
 - D. The post office is over there.

PART III.

You will be given 13 situations. For each situation say the appropriate expression in German. Then you will hear "STOP". Stop speaking. Check what you said with the tape. If possible, ask an instructor to monitor this part. Start the tape again.

1. You want someone to speak slowly. What do you say?
2. You point to an object and want to know what it is called in German. What do you say?
3. You want to know where the streetcar stop is. What do you say?
4. You want to know where the police station is. What do you say?
5. You want to know where the barracks is. What do you say?
6. You want to ask a lady if she is German. What do you say?
7. You want to know if the city hall is over there. What do you say?
8. You want to ask someone if he is in Berlin. What do you say?

9. You want to tell someone that you are in Germany. What do you say?
10. You want to know where there is a bus stop around here. What do you say?
11. You want to ask where there is a restaurant around here. What do you say?
12. You want to know where there is a bridge around here. What do you say?
13. You want to say good-bye to someone. What do you say?

This is the end of the Self-evaluation Quiz. Continue on to the next module.

KEY TO SELF-EVALUATION QUIZ

PART I.

1. A
2. C
3. A
4. B
5. B
6. C

PART II.

1. C
2. A
3. C
4. D
5. A
6. C

GUIDE FOR REVIEW

If you missed any questions on Part I of the Self-evaluation Quiz, review the conversation and do Supplementary Exercise A.

If you missed any questions on Part II, do Supplementary Exercise B.

SUPPLEMENTARY EXERCISE A.

Read the following sentences and select the correct translation by writing A or B; then check your answers with the key, provided after the exercise.

- | | |
|----------------------------|---|
| 1. Where is the church? | A. Wo ist die Kirche?
B. Wo ist die Brücke? |
| 2. Please go slowly. | A. Sprechen Sie bitte langsam.
B. Gehen Sie bitte langsam. |
| 3. Is this the city hall? | A. Ist das das Rathaus?
B. Wo ist das Rathaus? |
| 4. Good-bye. | A. Auf Wiedersehen.
B. Vielen Dank. |
| 5. Are you German? | A. Was ist das auf deutsch?
B. Sind Sie Deutscher? |
| 6. Excuse me. | A. Entschuldigen Sie.
B. Vielen Dank. |
| 7. What is this in German? | A. Wo ist Deutschland?
B. Was ist das auf deutsch? |
| 8. Where is the city hall? | A. Wo ist das Rathaus?
B. Wo ist das Kaufhaus? |
| 9. Is this the castle? | A. Wo ist das Schloß?
B. Ist das das Schloß? |

KEY.

- | | | |
|------|------|------|
| 1. A | 4. A | 7. B |
| 2. B | 5. B | 8. A |
| 3. A | 6. A | 9. B |

Now take the Supplementary Self-evaluation Quiz A.

SUPPLEMENTARY SELF-EVALUATION QUIZ A

For each of the following situations, select the correct German expression. On a sheet of paper write either A, B, or C.

1. You approach a stranger in the street and ask him where the church is. What would you say?
 - A. Wo ist das Schloß?
 - B. Wo ist die Kaserne?
 - C. Wo ist die Kirche?
2. You want a person to speak German. What would you say?
 - A. Sprechen Sie bitte Deutsch.
 - B. Sprechen Sie bitte langsam.
 - C. Sind Sie Deutscher?
3. You see a building and want to know if it's the castle. What would you say?
 - A. Wo ist das Rathaus?
 - B. Ist das das Schloß?
 - C. Wo ist das Schloß?
4. You want to know how something is called in German. What would you say?
 - A. Sprechen Sie bitte Deutsch.
 - B. Sind Sie Deutsche?
 - C. Was ist das auf deutsch?

5. You want to ask a woman if she is a German. What would you say?
- A. Sind Sie Deutsche?
 - B. Sind Sie in Deutschland?
 - C. Sind Sie Deutscher?

Compare your choices with the key below; then go back to Part II of the Self-evaluation Quiz for Unit 2.

KEY.

- 1. C
- 2. A
- 3. B
- 4. C
- 5. A

SUPPLEMENTARY EXERCISE B.

Cover the English sentences with a piece of paper. Read the German sentences aloud and translate them into English. Check your translation by uncovering the English translation one sentence at a time. If you wish, you may also translate the English sentences into German using the same procedure.

- | | |
|---|--|
| 1. Gehen Sie geradeaus, dann die erste Straße rechts. | Go straight ahead, then the first street on the right. |
| 2. Wo ist die Karte von Deutschland? | Where is the map of Germany? |
| 3. Das Schloß ist dort. | The castle is over there. |
| 4. Das ist eine Straße in Köln. | This is a street in Cologne. |
| 5. Das ist nicht das Rathaus, das ist eine Kirche. | That's not the city hall; that's a church. |

6. Ich bin Amerikanerin. I'm an American (female).
7. Das ist eine Karte von Deutschland. That's a map of Germany.
8. Dort ist ein Krankenhaus. There is a hospital.

Now take the Supplementary Self-evaluation Quiz B.

SUPPLEMENTARY SELF-EVALUATION QUIZ B

For each of the following German sentences, select the correct English translation. On a sheet of paper write A, B, or C.

1. Die Karte von Deutschland ist dort.
 - A. The map of Germany is over there.
 - B. Here is the map of Germany.
 - C. This is not the map of Germany.
2. Das ist das Schloß in Heidelberg.
 - A. Is this the castle in Heidelberg?
 - B. This is the castle in Heidelberg.
 - C. Where is the Heidelberg castle?
3. Gehen Sie geradeaus, dort ist die Kaserne.
 - A. Go straight ahead, there is the city hall.
 - B. Go straight ahead, there is the department store.
 - C. Go straight ahead, there is the barracks.
4. Das ist nicht die Kirche, das ist das Rathaus.
 - A. This is the city hall, the church is over there.
 - B. That's not the church, that's the city hall.
 - C. That's not the barracks, that's the city hall.

5. Wo ist die Kaserne in München?
- A. Where is the barracks in Munich?
 - B. Where is the church in Munich?
 - C. Where is the map of Munich?

Compare your choices with the key below; then go back to Part III of the Self-evaluation Quiz for Unit 2.

KEY.

- 1. A
- 2. B
- 3. C
- 4. B
- 5. A

VOCABULARY

der Amerikaner	American (male)
die Amerikanerin	American (female)
auf deutsch	in German
auf Wiedersehen	good-bye
das Auto	car
die Autobahn	expressway (freeway)
der Bahnhof	railroad station
die Bank	bank
bin	am
bitte	please
die Brücke	bridge
der Bus	bus
die Bushaltestelle	bus stop
danke schön	thank's a lot
dann	then
das	this, that, it, the
der	the
der Deutsche, ein Deutscher	German (male)
die Deutsche	German (female)
die	the
dort	there, over there
ein, eine	a, one
Entschuldigen Sie!	Excuse me!
erste	first
der Flughafen	airport

Gehen Sie ... ! geradeaus	Go ! straight ahead
die Haltestelle hier	stop (bus or streetcar) here
ich ist	I is
ja	yes
die Karte	map
die Kaserne	barracks
das Kaufhaus	department store
die Kirche	church
Köln	Cologne
das Krankenhaus	hospital
langsam	slowly
links	left
München	Munich
nein nicht	No! not
die Polizei	police station, police
die Post	post office
das Rathaus	city hall
rechts	right (opposite of left)
das Restaurant	restaurant
das Schloß Sie	castle you

sind
sprechen
die Straße
die Straßenbahnhaltestelle

are
to speak
street
streetcar stop

Vielen Dank!
von

Thank you very much.
of, from

was
Wien
wo

what
Vienna
where

zweite

second